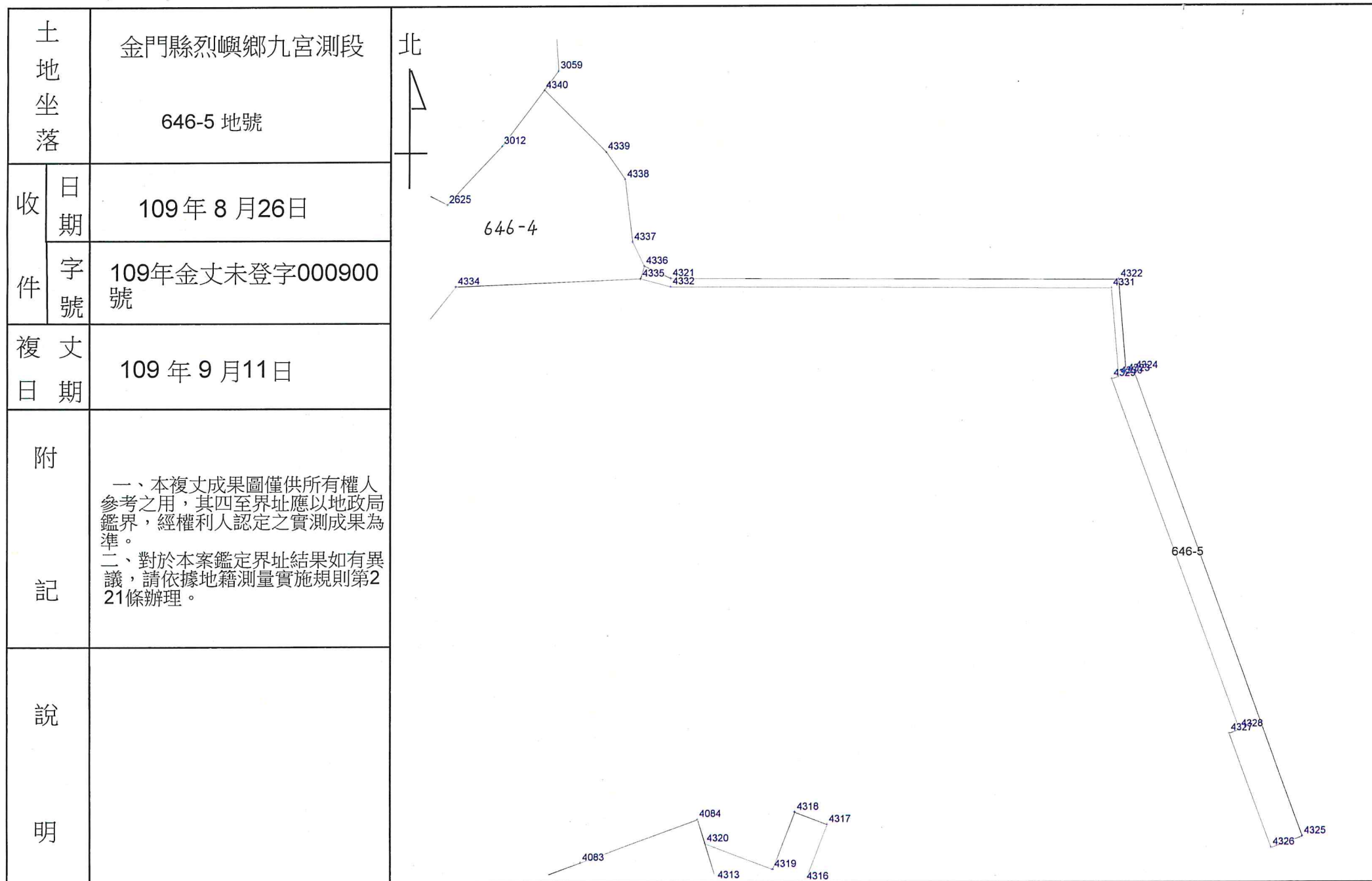


土地複丈成果圖

This is a detailed map of a land area, likely a survey or a map of a specific region. The map is characterized by numerous numbered parcels, many of which are labeled with a number followed by a hyphen and a letter (e.g., 320-1, 646-4, 790-2, 725-1). The parcels are outlined in black lines, and the numbers are printed in black. The map also includes a north arrow in the top left corner, pointing towards the top of the page. The overall layout is a complex network of lines and numbers, representing the boundaries and identifiers of the land parcels.

金門縣地政局局長 葉媚媚

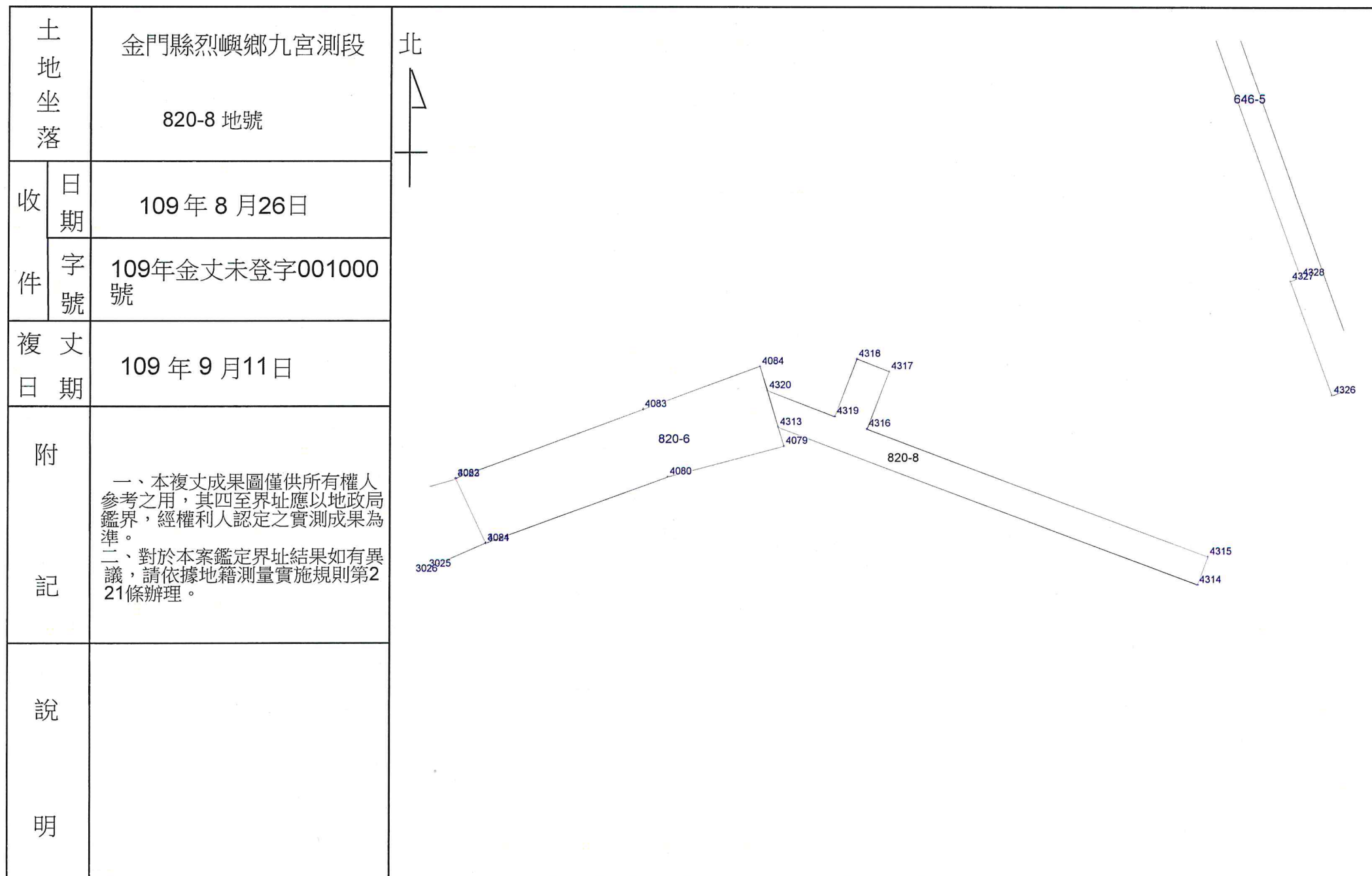
中華民國 年 月 日發給
109. 10. 08



比例尺：1/2000

金門縣地政局局長 葉媚媚

中華民國 109 年 10 月 03 日發給



比例尺：1/2000

金門縣地政局局長 葉媚媚

中華民國 年 月 日發給
109.10.03